

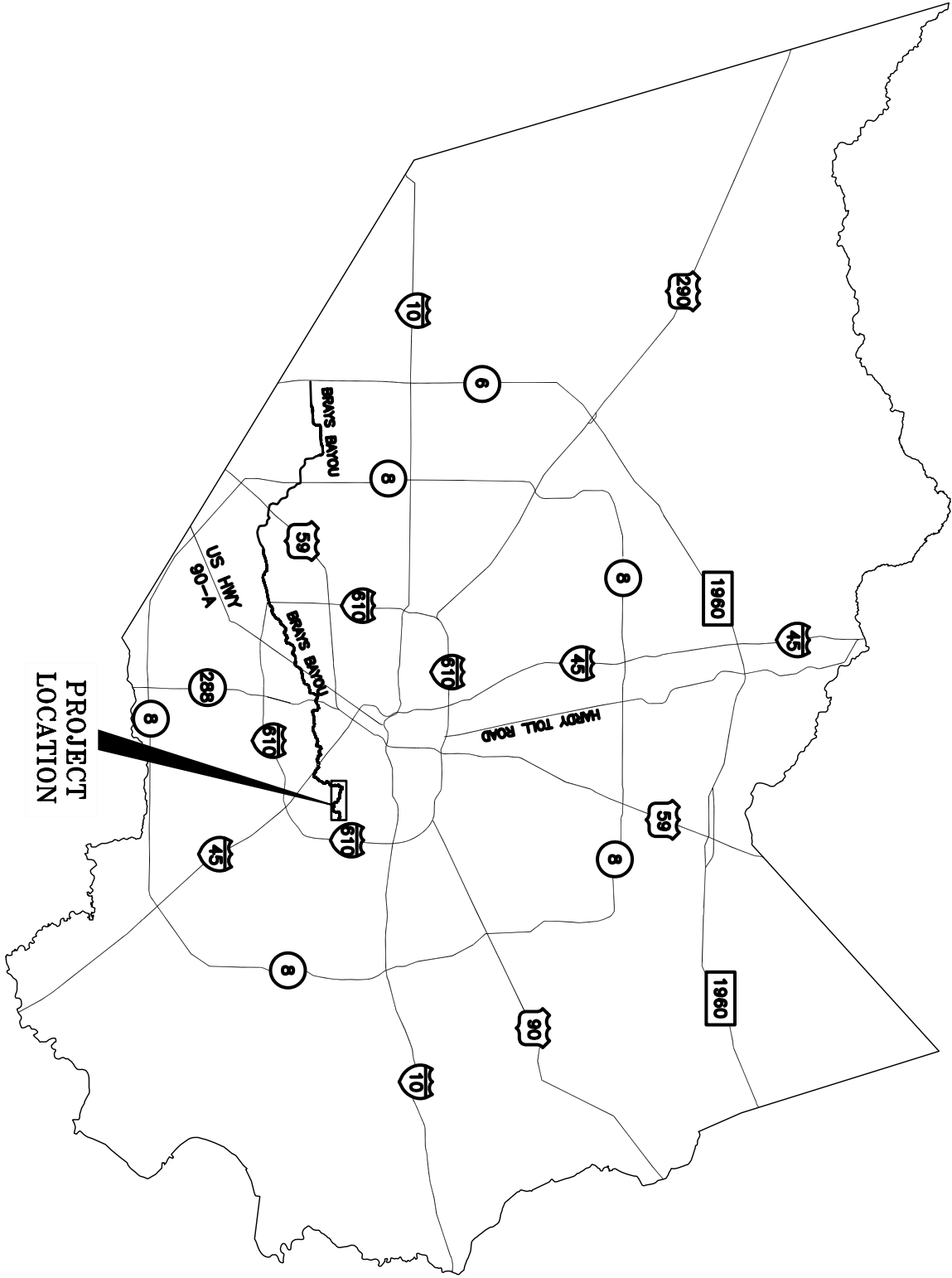
BRAYS BAYOU

"BROADWAY BRIDGE TO MASON PARK TRAIL DESIGN"

TRAIL DEVELOPMENT PACKAGE

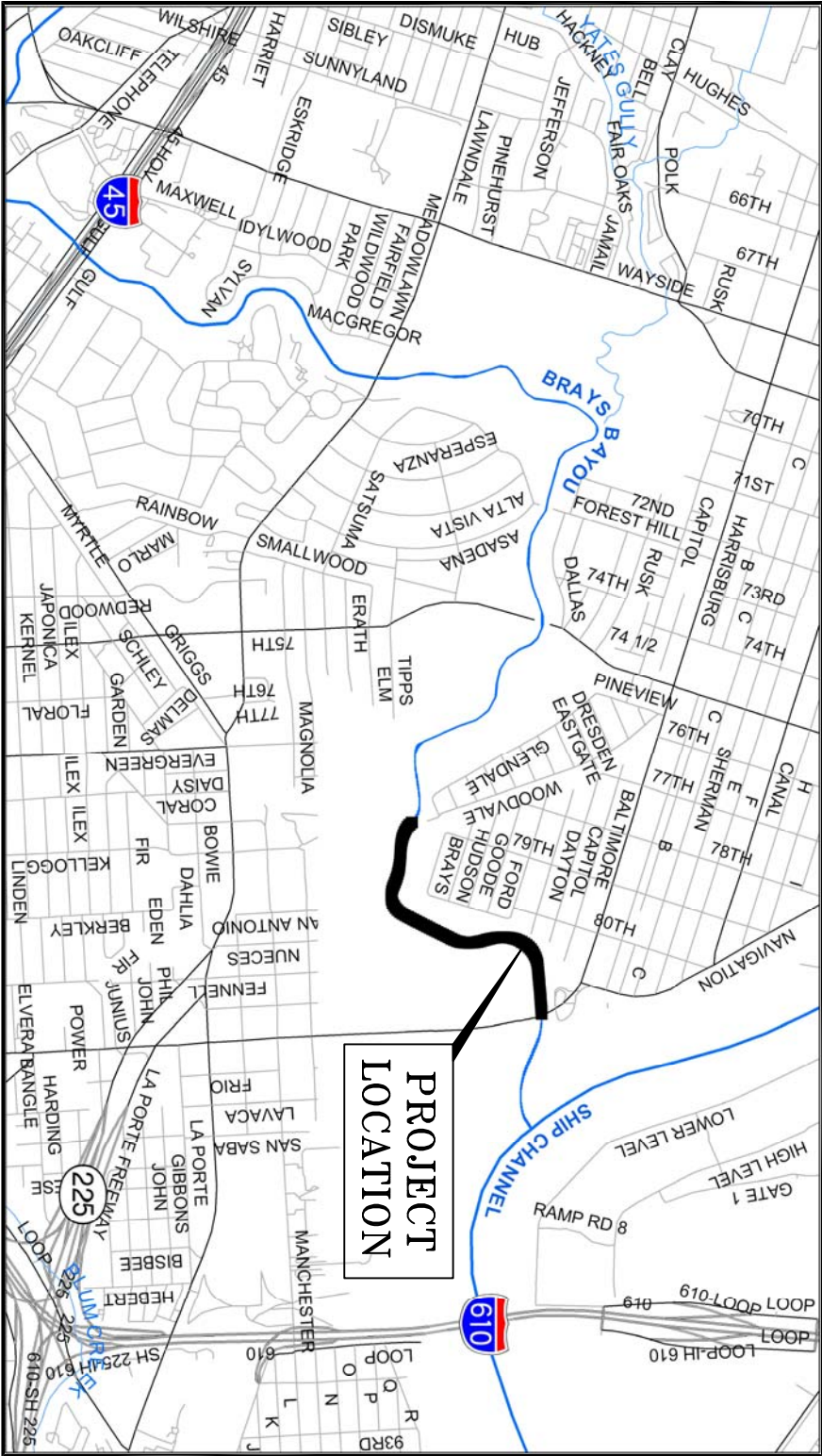
ISSUED FOR CONSTRUCTION

ISSUE DATE: DECEMBER 4, 2008



VICINITY MAP

KEY MAP 495W&X, 494Z, 535A&B AND 534D PCT. 2



LOCATION MAP

A Project of
the Houston Parks Board
(In conjunction with the
Brays Bayou Federal Flood
Control Project)

200 Kirby Drive, Suite 814
Houston, TX 77019
(713) 942-8500 (T)
(713) 942-7664 (F)

Design Team:

SWA Group
Landscape Architects
1245 West 18th Street Houston, Texas 77008
713.868.1676 v. 713.868.7409 f.

ABBREVIATIONS

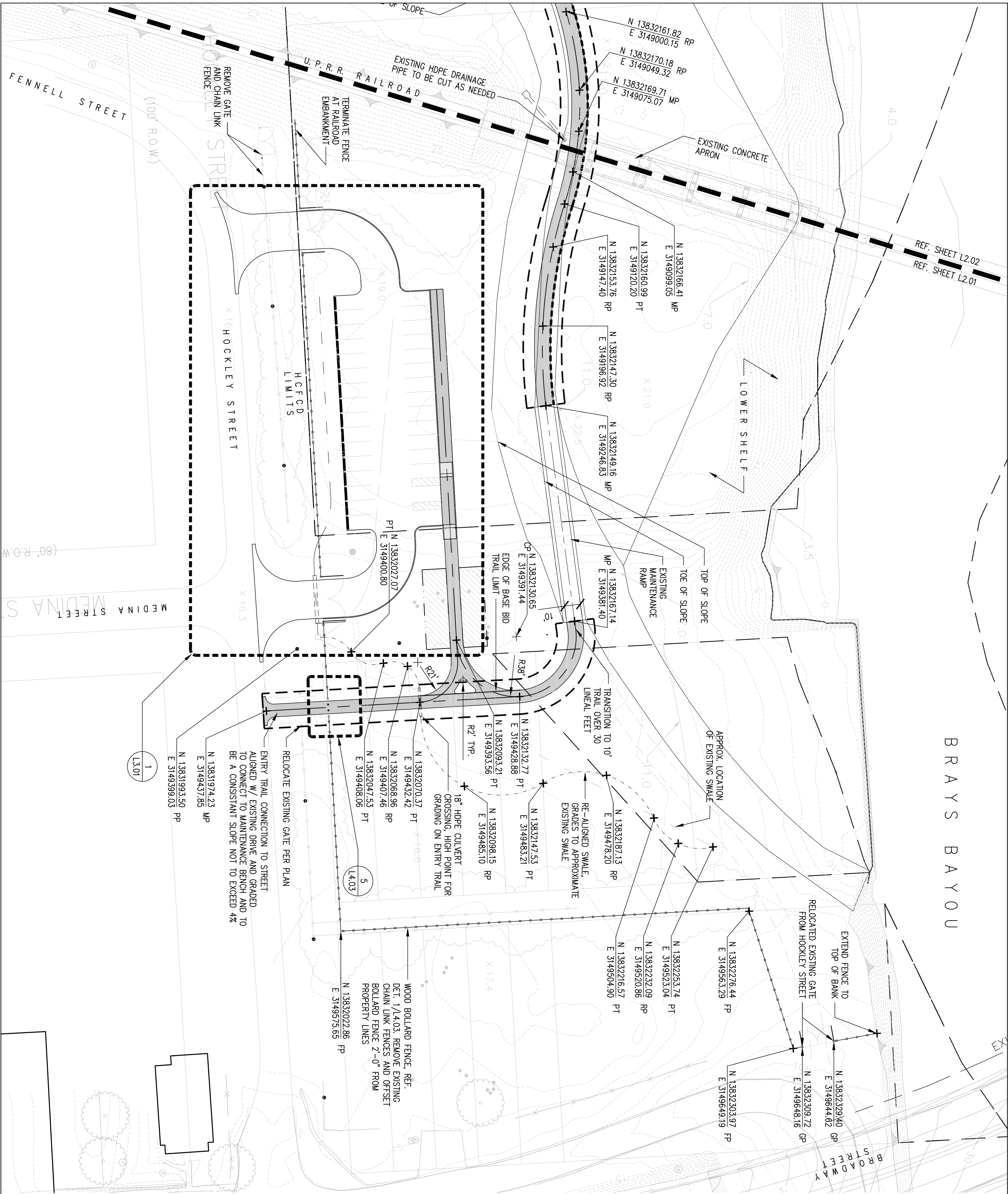
APPROX	APPROXIMATE
BC	BOTTOM OF CURB
BOC	BACK OF CURB
BR	BOTTOM OF RAMP
BS	BOTTOM OF STEP
BV	BOTTOM OF WALL
CJ	CONTROL JOINT
CONC	CONCRETE
CONT	CONTINUOUS
CL	CENTERLINE
GP	GATE POST
DIA	DIAMETER
DN	DOWN
DWG	DRAWING
EJ	EXPANSION JOINT
ELEC	ELECTRICAL
ELEV	ELEVATION
EQ	EQUAL
ES	EASEMENT
EW	EACH WAY
EW	EXISTING
EW	EXISTING
FG	FINISHED GRADE
FL	FLOW LINE
FL	FIELD VERIFY
GP	GATE POST
LE	LINEAR FEET
LP	LIMIT OF WORK
LOW	LOW POINT
MP	MATCH PAYING
NP	NOT IN CONTRACT
NIC	ON CENTER
OC	PERPENDICULAR
PPR	POURED IN PLACE
PCB	POINT OF BEGINNING
PT	POINT OF TANGENCY
R	RADIUS
REF	REFERENCE
RENF	REINFORCED
RIM	RIM ELEVATION
ROW	RIGHT-OF-WAY
RP	REFERENCE POINT
SCH	SCHEDULE
SEC	SECTION
SHT	SHEET
SIM	SIMILAR
SIA	STATION
STRUC	STRUCTURAL
TC	TOP OF CURB
TP	TOP OF PAVING
TR	TOP OF RAMP
TW	TOP OF WALL
TYP	TYPICAL
WSE	WATER SURFACE ELEVATION

SHEET LIST

0.00	COVER SHEET
L 1.01	LAYOUT AND MATERIALS SHEET INDEX
L 2.01	LAYOUT AND MATERIALS PLAN
L 2.02	LAYOUT AND MATERIALS PLAN
L 2.03	LAYOUT AND MATERIALS PLAN
L 2.04	LAYOUT AND MATERIALS PLAN
L 2.05	LAYOUT AND MATERIALS PLAN
L 2.06	LAYOUT AND MATERIALS PLAN
L 3.01	ENLARGEMENT: PARKING LOT
L 4.01	SITE DETAILS
L 4.02	SITE DETAILS
L 4.03	SITE DETAILS
L 4.04	SITE DETAILS
L 5.01	GRADING: PARKING LOT



BRAYS BAYOU



LAYOUT LEGEND	
[---]	BASE BID LIMIT OF WORK
---	TRAIL CENTERLINE
N 1380581.30 E 301850.27	TRAIL LAYOUT COORDINATE
R125'	TRAIL RADIUS
---	TURN DOWN CONC. EDGE, REF. DET. 5/14.01
	CONC. TRAIL
	LIMIT OF CLEARING AND GRUBBING
---	SWALE CENTERLINE

NOTES:

1. BASE BID INCLUDES MAIN TRAIL INDICATED WITHIN BASE BID LIMITS AND INCLUDES ALL NECESSARY GRADING TO ACHIEVE MAXIMUM 4.9% ACCESSIBLE SLOPES, CONNECTIONS TO EXISTING CONCRETE PADS AND MAINTENANCE RAMPS, TURF REPAIR AND GRADING TO DISTURBANCE AREAS REQUIRED FOR CONSTRUCTION, AND ALL 15' ZONES OF CLEARING AND GRUBBING.

BRAYS BAYOU
TRAIL PLAN
(COURTESY OF BRAYS BAYOU TO
MASON PARK)

HOUSTON, TEXAS



HOUSTON
Sustainable
Design

1245 W. 18th Street
HOUSTON, TX, 77008
Fax: 713.668.7409
Ph: 713.668.1676



1. 11.03.08 ISSUED FOR BIDDING
2. 12.04.08 ISSUED FOR CONSTRUCTION
- 3.
- 4.
- 5.

Revisions



Scale: 1" = 30'-0"

Date: 4.10.08
Job Number: 10-0301

Drawing Title
LAYOUT AND
MATERIALS

Drawing Number
L2.01
© COPYRIGHT 2008 SWA Group

BRAYS BAYOU
TRAIL PLAN
(NORTH OF BRAYS BAYOU TO
MASON PARK)

HOUSTON, TEXAS



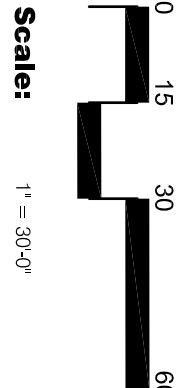
HOUSTON LEADERS
SUSAN HILL LOS ANGELES
DALLAS SAN DIEGO

1245 W. 18th Street
HOUSTON, TX 77008
Fax: 713.868.7409
Ph: 713.868.1676



1. 11.03.08 ISSUED FOR BIDDING
2. 12.04.08 ISSUED FOR CONSTRUCTION
- 3.
- 4.
- 5.

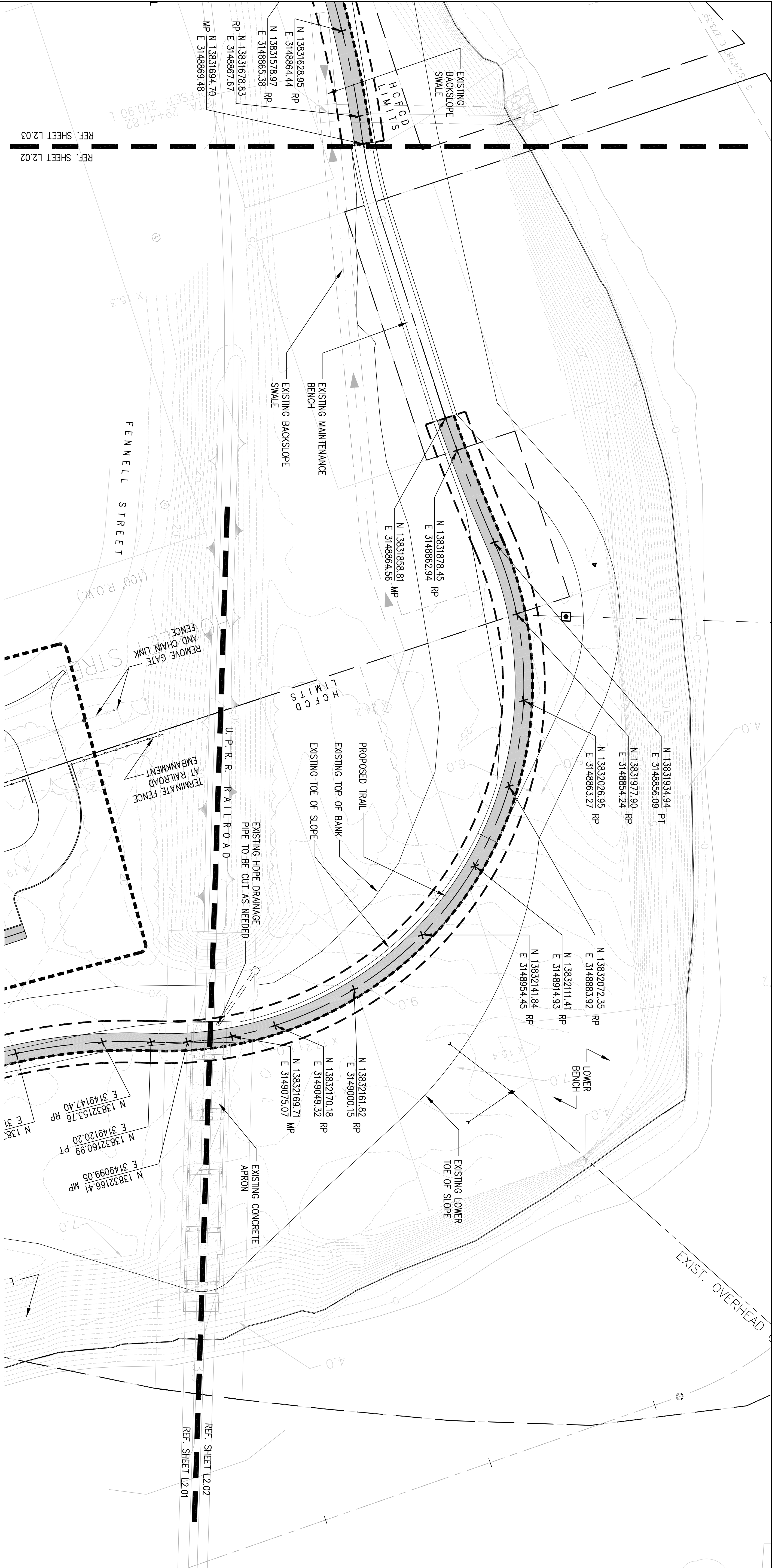
Revisions



Date: 4 DEC 08
Job Number: 10-0301

Drawing Title
LAYOUT AND MATERIALS

Drawing Number
L2.02
© COPYRIGHT 2008 SWA Group



NOTES:

1. BASE BID INCLUDES MAIN TRAIL INDICATED WITHIN BASE BID LIMITS AND INCLUDES ALL NECESSARY GRADING TO ACHIEVE MAXIMUM 4.9% ACCESSIBLE SLOPES, CONNECTIONS TO EXISTING CONCRETE PADS AND MAINTENANCE RAMPS. TURF REPAIR AND GRADING TO DISTURBANCE AREAS REQUIRED FOR CONSTRUCTION, AND ALL 15' ZONES OF CLEARING AND GRUBBING.

LAYOUT LEGEND

- BASE BID LIMIT OF WORK
- TRAIL CENTERLINE
- TRAIL LAYOUT COORDINATE
- TRAIL RADIUS R125'
- TURN DOWN CONC. EDGE, REF. DET. 5/14.01
- CONC. TRAIL
- LIMIT OF CLEARING AND GRUBBING
- SWALE CENTERLINE

BRAYS BAYOU
TRAIL PLAN
(NORTH OF BRAYS BAYOU TO
MASON PARK)

HOUSTON, TEXAS



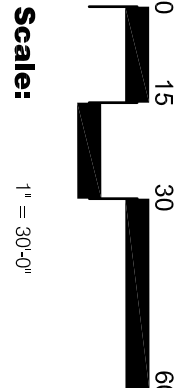
HOUSTON LEADERS
SARASOTA LOS ANGELES
DALLAS SAN DIEGO

1245 W. 18th Street
HOUSTON, TX 77008
Fax: 713.868.7409
Ph: 713.868.1676



1. 11.03.08 ISSUED FOR BIDDING
2. 12.04.08 ISSUED FOR CONSTRUCTION
- 3.
- 4.
- 5.

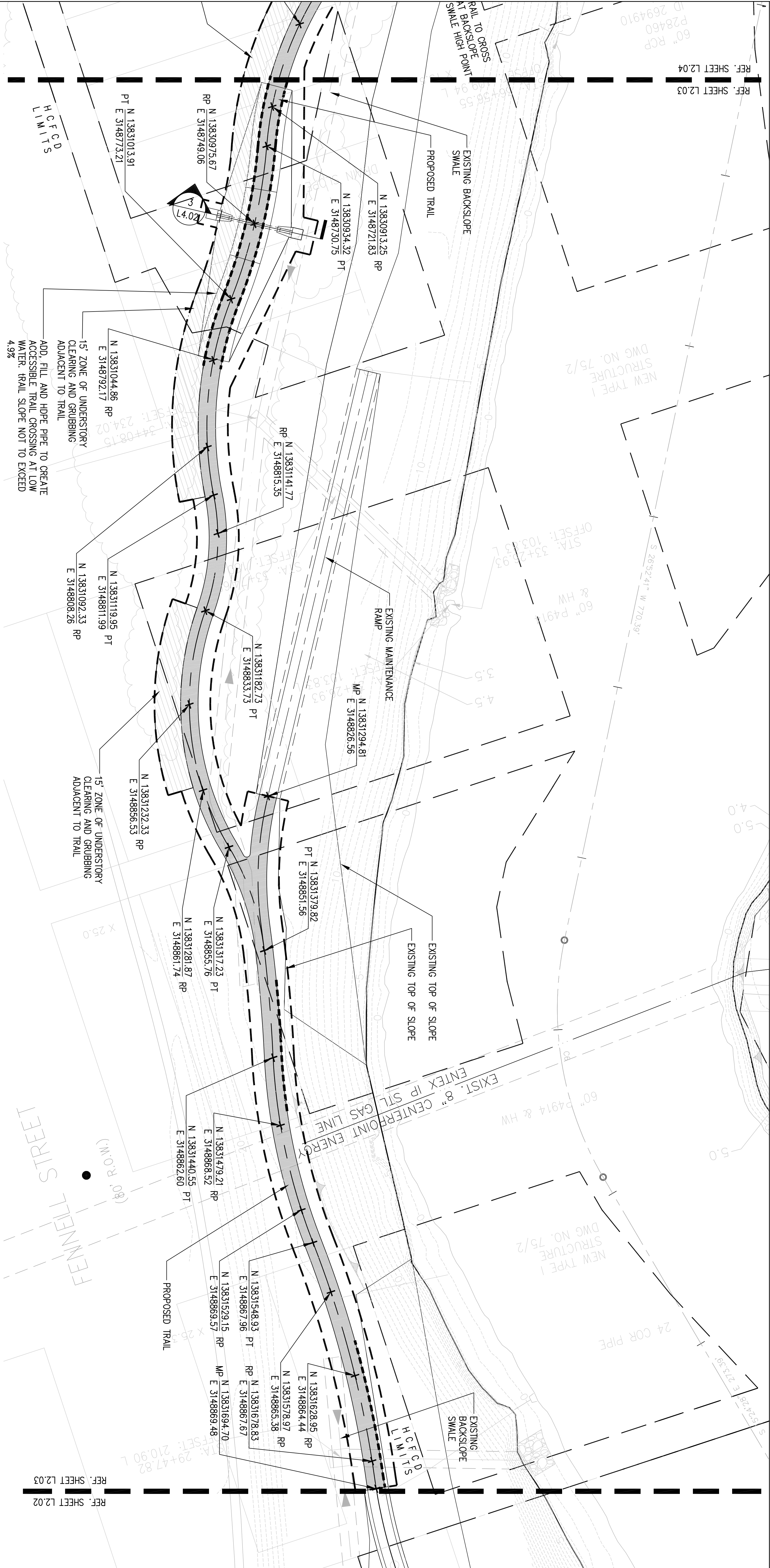
Revisions



Date: 4 DEC 08
Job Number: 12-0301

Drawing Title
LAYOUT AND
MATERIALS

Drawing Number
L2.03
© COPYRIGHT 2008 SWA Group



NOTES:

1. BASE BID INCLUDES MAIN TRAIL INDICATED WITHIN BASE BID LIMITS AND INCLUDES ALL NECESSARY GRADING TO ACHIEVE MAXIMUM 4.9% ACCESSIBLE SLOPES, CONNECTIONS TO EXISTING CONCRETE PADS AND MAINTENANCE RAMPS, TURF REPAIR AND GRADING TO DISTURBANCE AREAS REQUIRED FOR CONSTRUCTION, AND ALL 15' ZONES OF CLEARING AND GRUBBING.

LAYOUT LEGEND

- [---] BASE BID LIMIT OF WORK
- TRAIL CENTERLINE
- N 1380581.30
E 301850.27
TRAIL LAYOUT
COORDINATE
- R125'
TRAIL RADIUS
- TURN DOWN CONC. EDGE,
REF. DET. 5/4.01
- CONC. TRAIL
- [Hatched Box] LIMIT OF CLEARING AND
GRUBBING
- SWALE CENTERLINE

BRAYS BAYOU
TRAIL PLAN
(MOUTH OF BRAYS BAYOU TO
MASON PARK)

HOUSTON, TEXAS



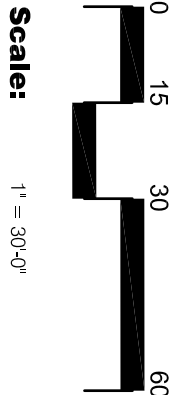
HOUSTON
Sustainable
Design
LABOR
Sustainable
Design

1245 W. 18th Street
HOUSTON, TX, 77008
Fax: 713.868.7409
Ph: 713.868.1676



1. 11.03.08 ISSUED FOR BIDDING
2. 12.04.08 ISSUED FOR CONSTRUCTION
- 3.
- 4.
- 5.

Revisions



Date: 4 DEC 08
Job Number: 12567

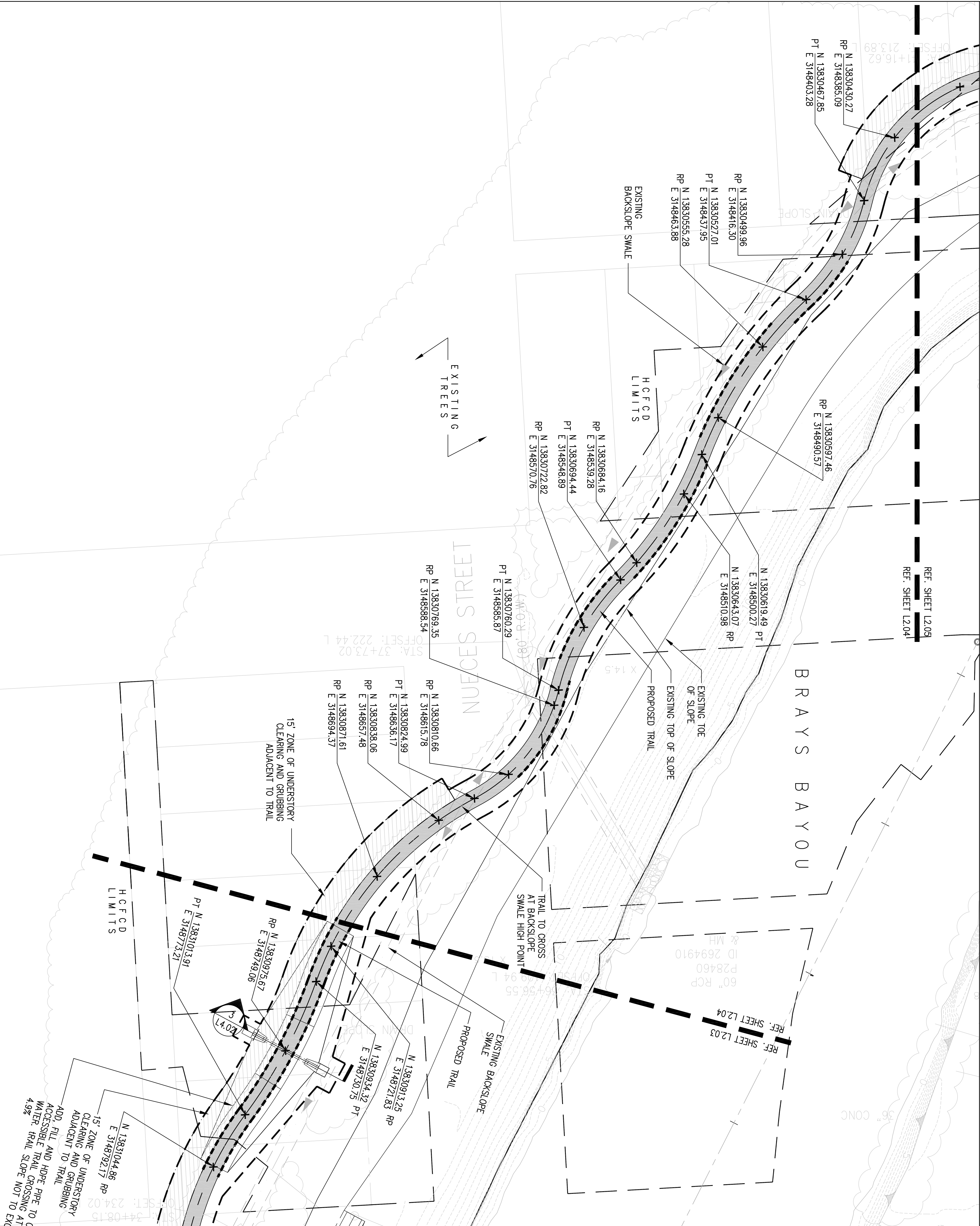
Drawing Title
LAYOUT AND
MATERIALS

Drawing Number
L2.04
© COPYRIGHT 2008 SWA Group

LAYOUT LEGEND	
	BASE BID LIMIT OF WORK
	TRAIL CENTERLINE
	TRAIL LAYOUT COORDINATE
	TRAIL RADIUS
	TURN DOWN CONC. EDGE, REF. DET. 5/L4.01
	CONC. TRAIL
	LIMIT OF CLEARING AND GRUBBING
	SWALE CENTERLINE

NOTES:

1. BASE BID INCLUDES MAIN TRAIL INDICATED WITHIN BASE BID LIMITS AND INCLUDES ALL NECESSARY GRADING TO ACHIEVE MAXIMUM 4.9% ACCESSIBLE SLOPES, CONNECTIONS TO EXISTING CONCRETE PADS AND MAINTENANCE RAMPS, TURF REPAIR AND GRADING TO DISTURBANCE AREAS REQUIRED FOR CONSTRUCTION, AND ALL 15' ZONES OF CLEARING AND GRUBBING.



BRAYS BAYOU
TRAIL PLAN
(NORTH OF BRAYS BAYOU TO
MASON PARK)

HOUSTON, TEXAS



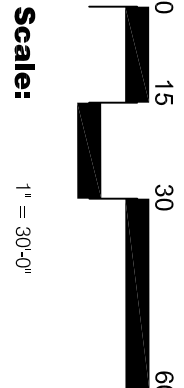
HOUSTON LEADERS
SUSAN HILL LOS ANGELES
DANIELA SANGHVI

1245 W. 18th Street
HOUSTON, TX, 77008
FAX 713.868.7409
PH. 713.868.1676



1. 11.03.08 ISSUED FOR BIDDING
2. 12.04.08 ISSUED FOR CONSTRUCTION
- 3.
- 4.
- 5.

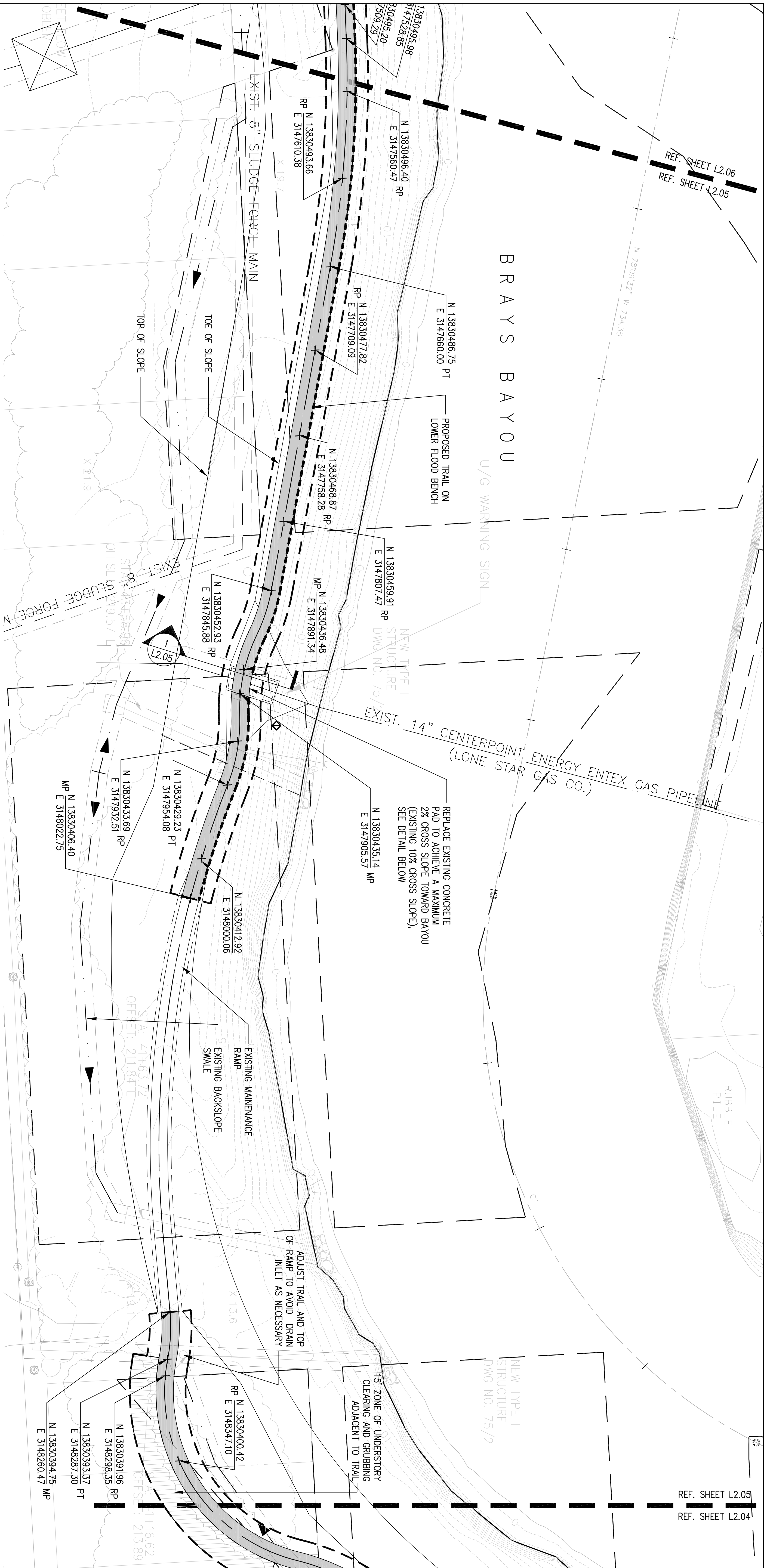
Revisions



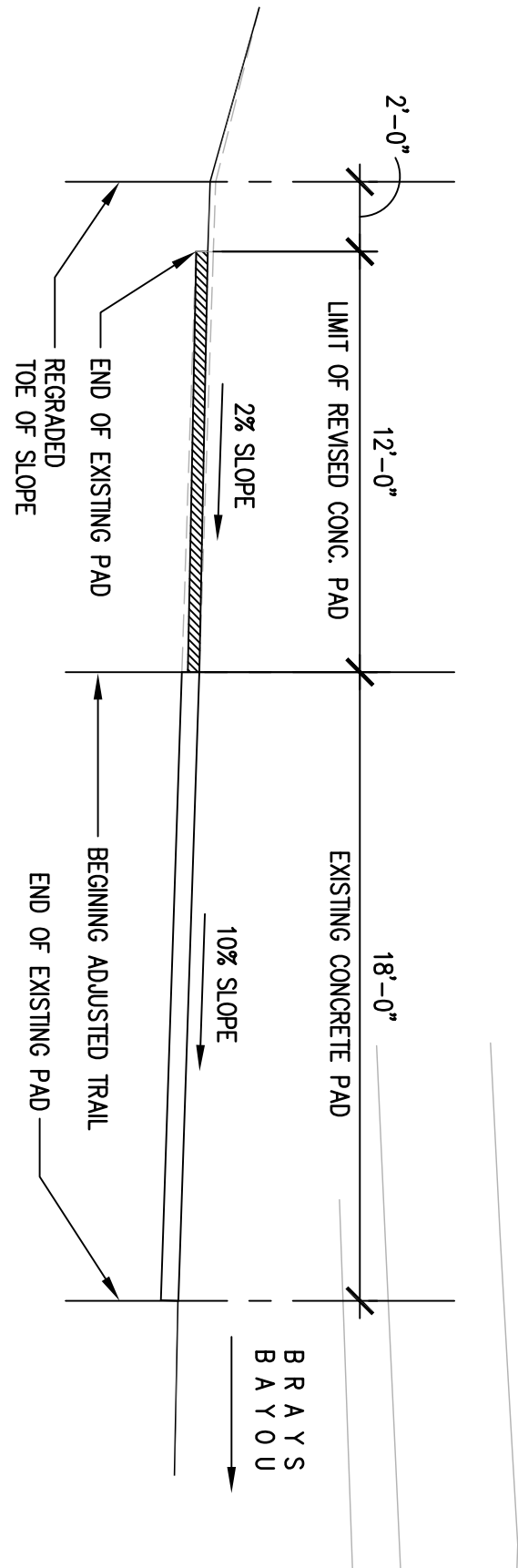
Date: 4 DEC 08
Job Number: 12-05

Drawing Title
LAYOUT AND
MATERIALS

Drawing Number
L2.05
© COPYRIGHT 2008 SWA Group



LAYOUT LEGEND	NOTES:
BASE BID LIMIT OF WORK	1. BASE BID INCLUDES MAIN TRAIL INDICATED WITHIN BASE BID LIMITS AND INCLUDES ALL NECESSARY GRADING TO ACHIEVE MAXIMUM 4.9% ACCESSIBLE SLOPES, CONNECTIONS TO EXISTING CONCRETE PADS, AND MAINTENANCE RAMPS. TURF REPAIR AND GRADING TO DISTURBANCE AREAS REQUIRED FOR CONSTRUCTION, AND ALL 15' ZONES OF CLEARING AND GRUBBING.
TRAIL CENTERLINE	
TRAIL LAYOUT COORDINATE	
TRAIL RADIUS	
TURN DOWN CONC. EDGE, REF. DET. 5/L4.01	
CONC. TRAIL	
LIMIT OF CLEARING AND GRUBBING	
SWALE CENTERLINE	



1 CENTERPOINT EASMENT CROSSING
NOT TO SCALE

BRAYS BAYOU
TRAIL PLAN
(MOUTH OF BRAYS BAYOU TO
MASON PARK)

HOUSTON, TEXAS



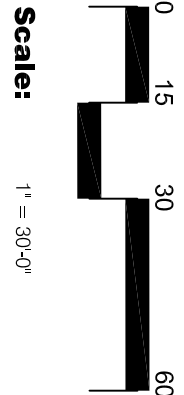
HOUSTON LEONARD
SUSANILLO LOS ANGELES
DALLAS SAN ANTONIO

1245 W. 18th Street
HOUSTON, TX, 77008
FAX 713.688.7409
PH. 713.688.1676



1. 11.03.08 ISSUED FOR BIDDING
2. 12.04.08 ISSUED FOR CONSTRUCTION
- 3.
- 4.
- 5.

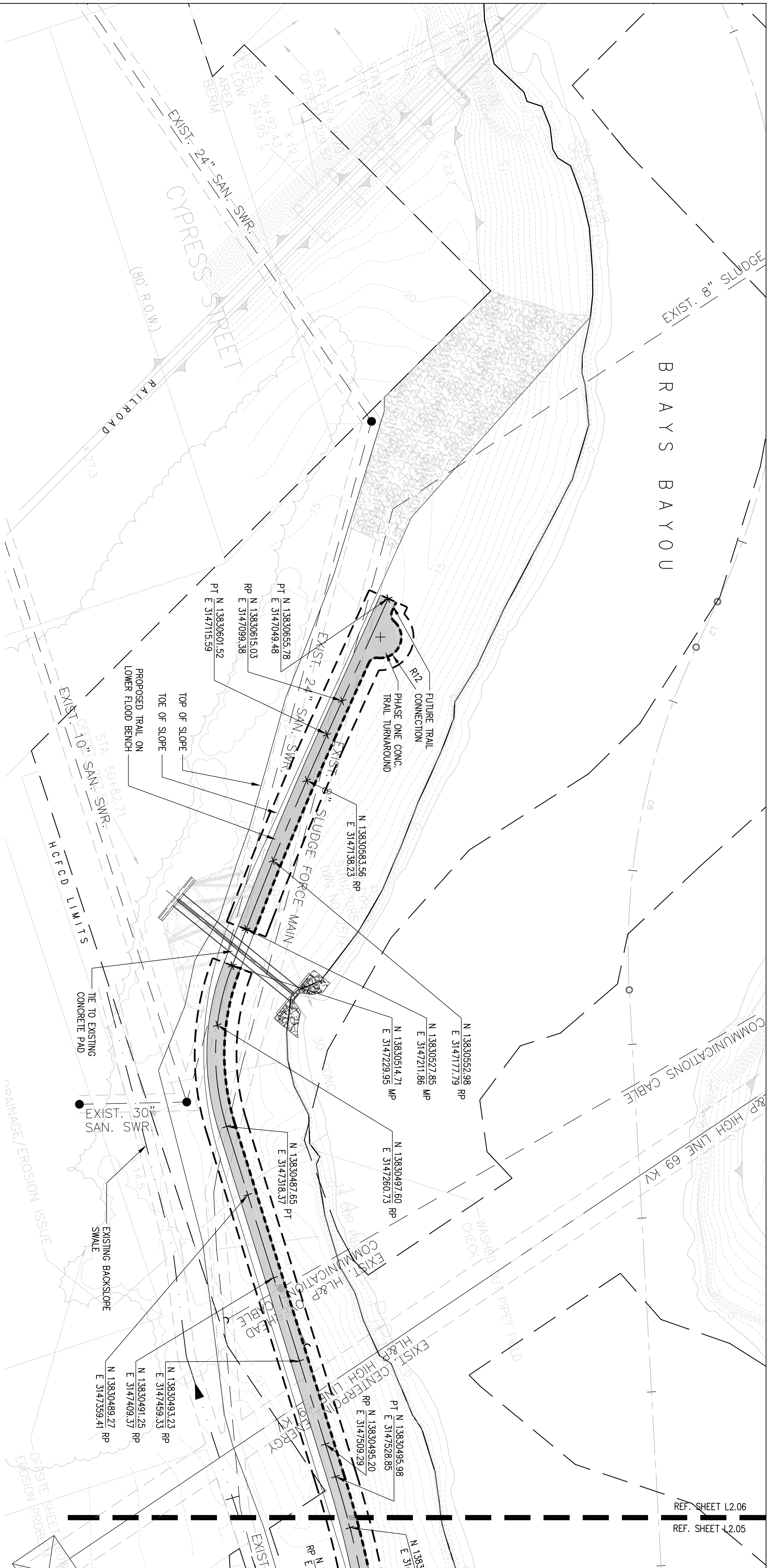
Revisions



Date: 4 DEC 08
Job Number: 10-0301

Drawing Title
LAYOUT AND
MATERIALS

Drawing Number
L2.06
© COPYRIGHT 2008 SWA Group



LAYOUT LEGEND

- [---] BASE BID LIMIT OF WORK
- TRAIL CENTERLINE
- N 1380581.30
E 301850.27 TRAIL LAYOUT COORDINATE
- R125' TRAIL RADIUS
- TURN DOWN CONC. EDGE, REF. DET. 5/L4.01
- CONC. TRAIL
- LIMIT OF CLEARING AND GRUBBING
- SWALE CENTERLINE

NOTES:

1. BASE BID INCLUDES MAIN TRAIL INDICATED WITHIN BASE BID LIMITS AND INCLUDES ALL NECESSARY GRADING TO ACHIEVE MAXIMUM 4.9% ACCESSIBLE SLOPES, CONNECTIONS TO EXISTING CONCRETE PADS, AND MAINTENANCE RAMPS. TURF REPAIR AND GRADING TO DISTURBANCE AREAS REQUIRED FOR CONSTRUCTION, AND ALL 15' ZONES OF CLEARING AND GRUBBING.

BRAYS BAYOU
TRAIL PLAN
(NORTH OF BRAYS BAYOU TO
MASON PARK)

HOUSTON, TEXAS



HOUSTON LEADERS
SUSAN LIOU LOS ANGELES
DANIELA SHANGHAI

1245 W. 18th Street
HOUSTON, TX, 77008
PH 713.868.7409
PH 713.868.1676



1. 11.03.08 ISSUED FOR BIDDING
2. 12.04.08 ISSUED FOR CONSTRUCTION
- 3.
- 4.
- 5.

Revisions



Scale: 1"=10'-0"

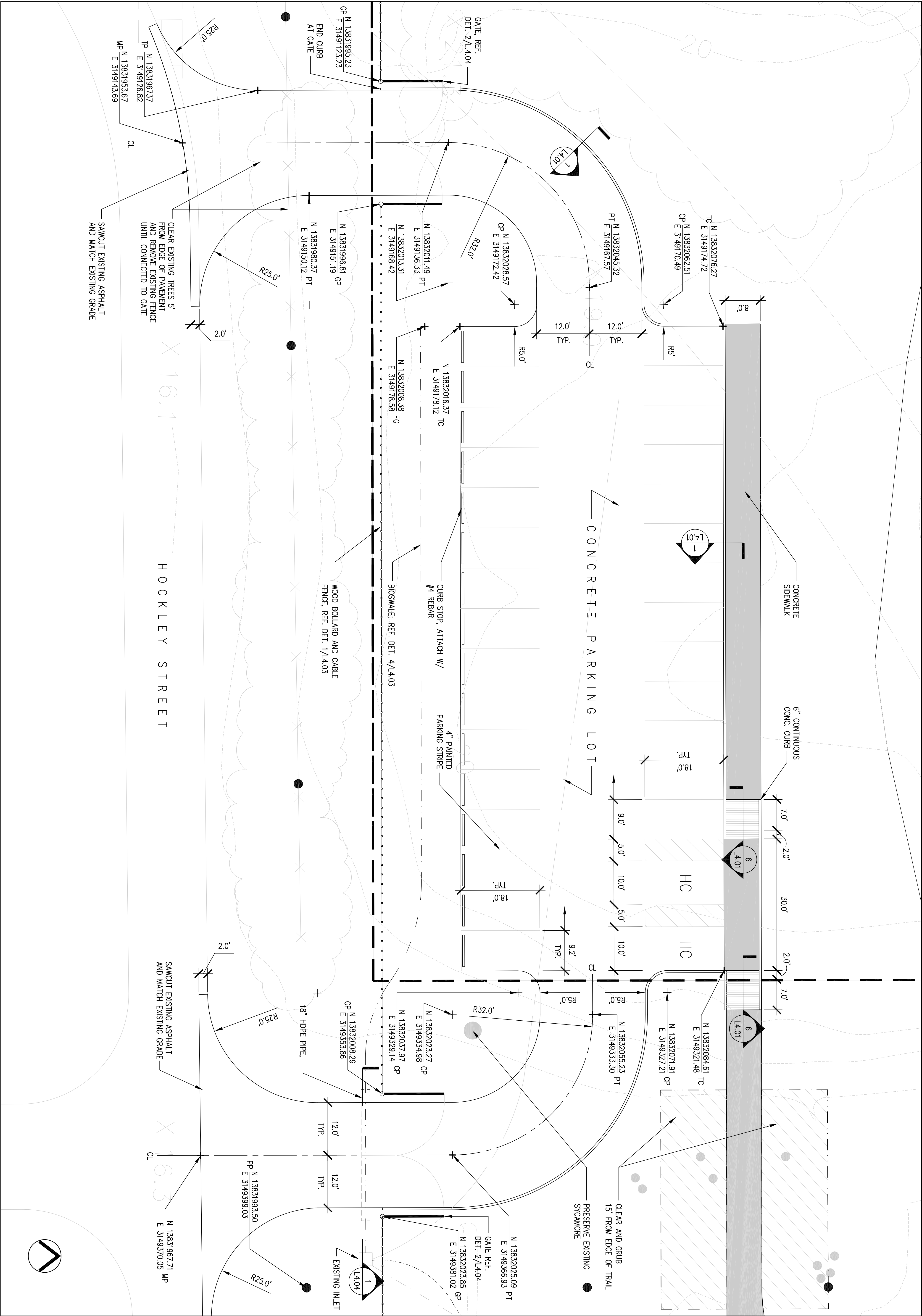
Date: 4 DEC 08
Job Number: 10-0301

Drawing Title
LAYOUT AND MATERIALS:
PARKING LOT

Drawing Number

L3.01

© COPYRIGHT 2008 SWA Group



BRAYS BAYOU TRAIL PLAN

HOUSTON, TEXAS



HOUSTON	Laguna
Sausalito	Los Angeles
Dallas	Shanghai

1245 W. 18th Street
Houston, TX. 77008
Fax 713.868.7401
Ph. 713.868.167



1. 11.03.08 ISSUED FOR BIDDING
2. 12.04.08 ISSUED FOR CONSTRUCTION
- 3.
- 4.
- 5.

Revision

Scale

Date: 4 DEC 08
Job Number: HCFN201

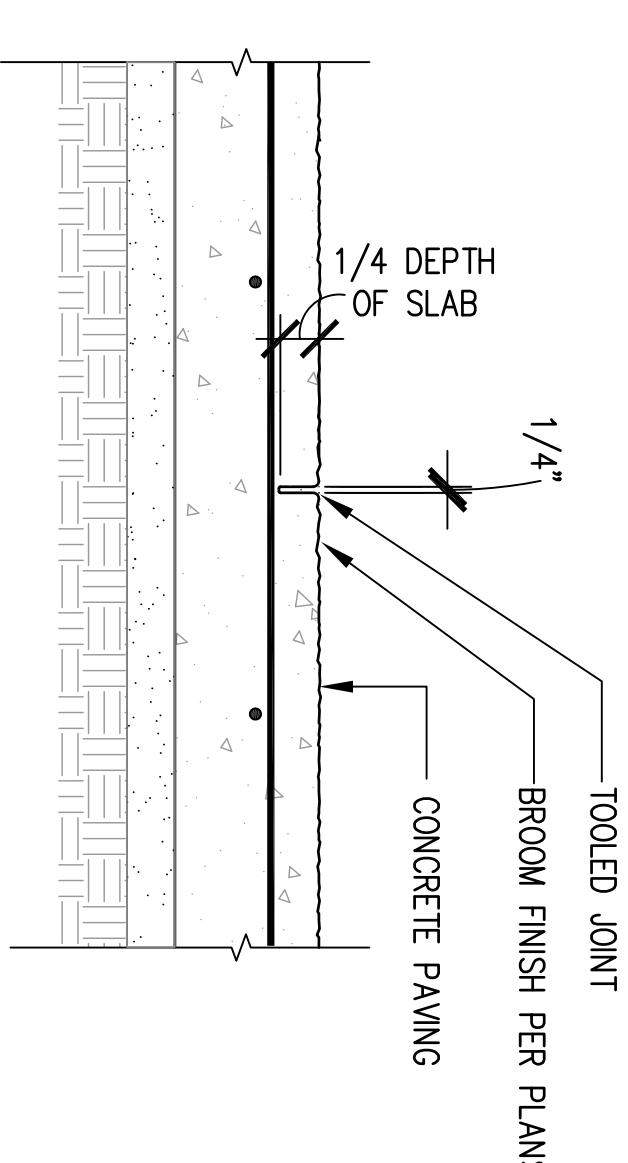
Drawing Title

SITE DETAILS

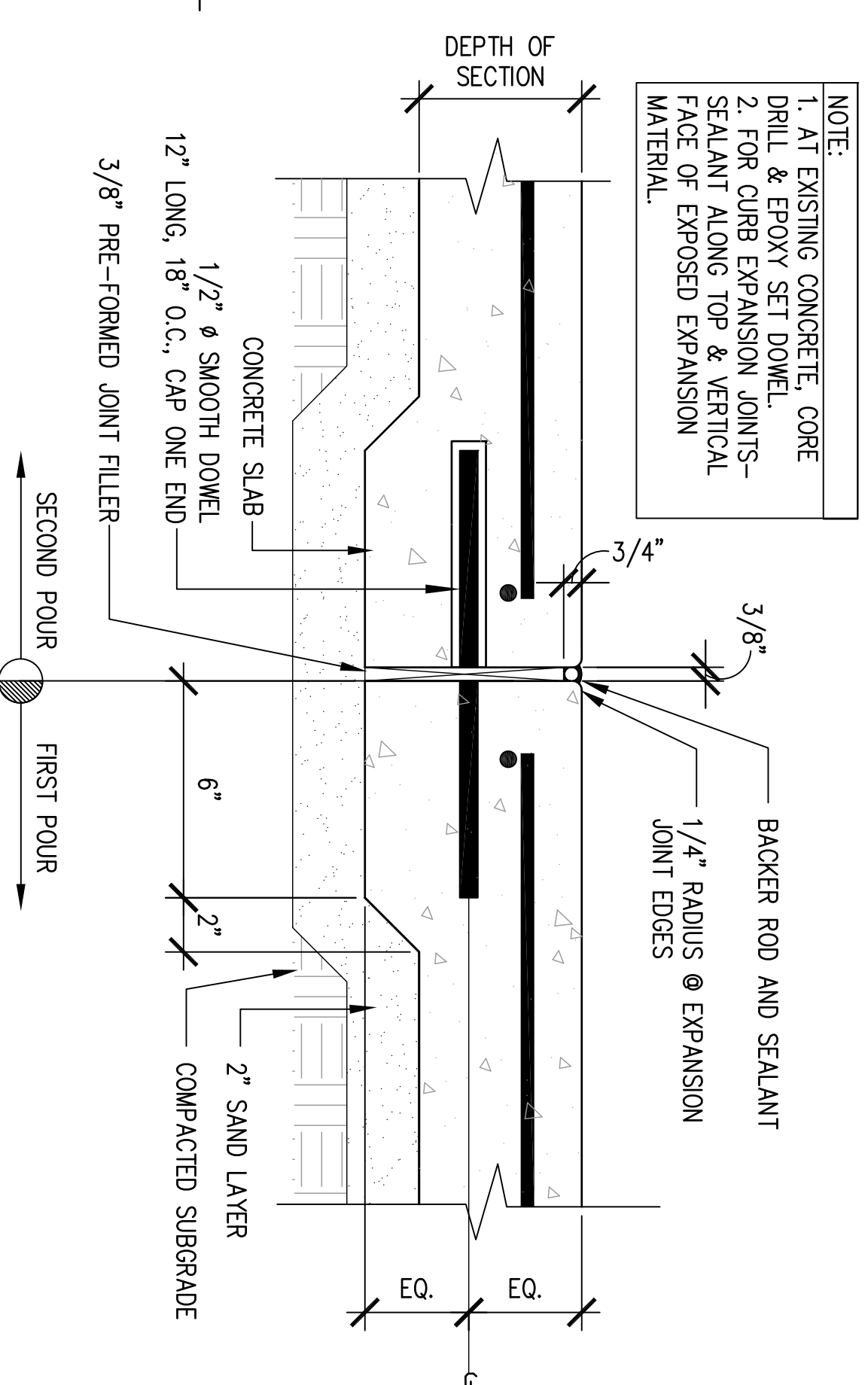
Drawing Number

L4.01

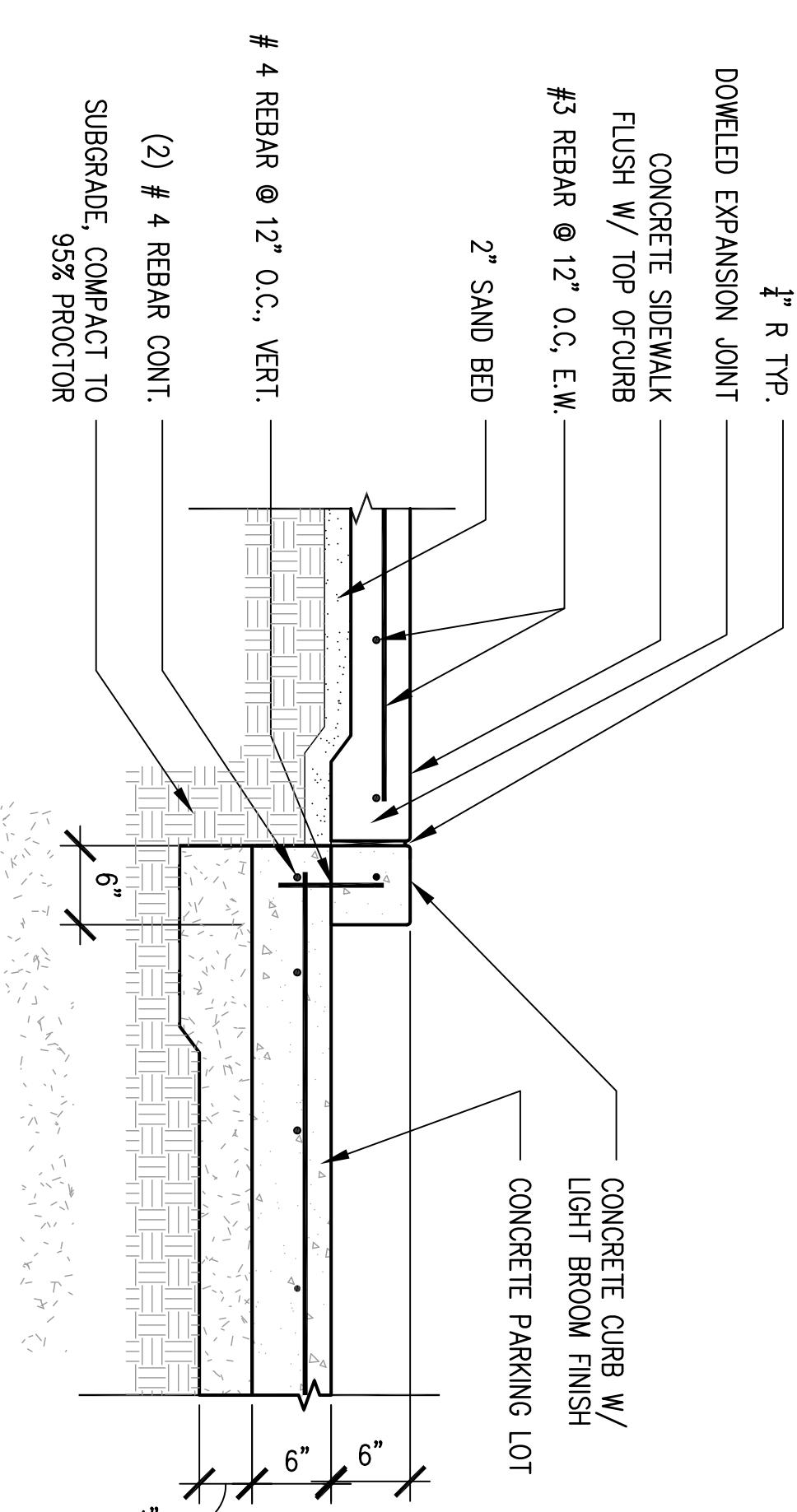
● COPYRIGHT 2006 **SWA** Group



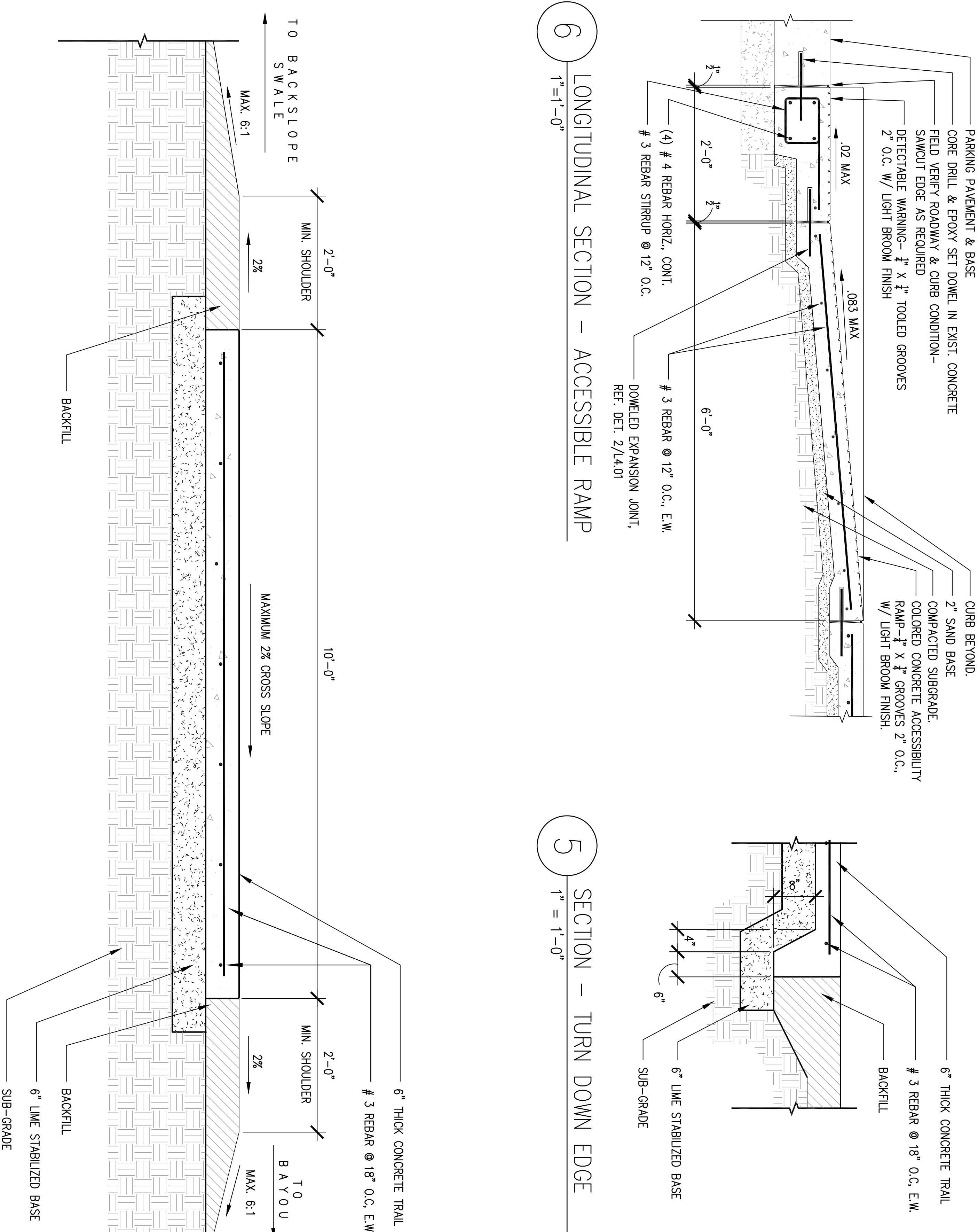
SECTION - TYPICAL CONTROL JOINT



2 SECTION – TYPICAL EXPANSION JOINT
3"=1'-0"



1 SECTION - PARKING LOT CURE
1"=1'-0"





1. 11.03.08 ISSUED FOR BIDDING
2. 12.04.08 ISSUED FOR CONSTRUCTION
- 3.
- 4.
- 5.

Revisions

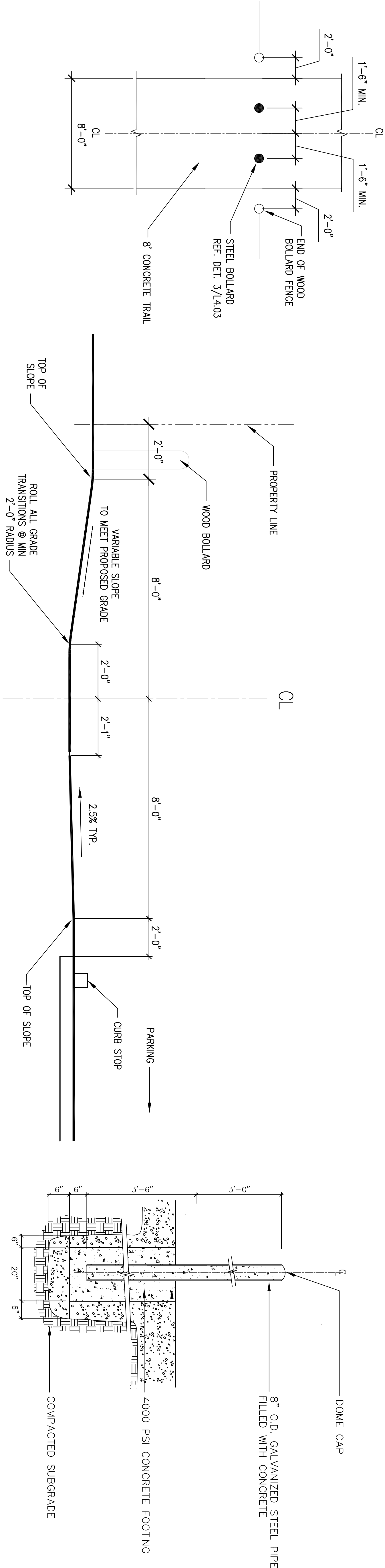
Scale:

Date: 4 DEC 08
Job Number: 10070001

Drawing Title
SITE DETAILS

Drawing Number

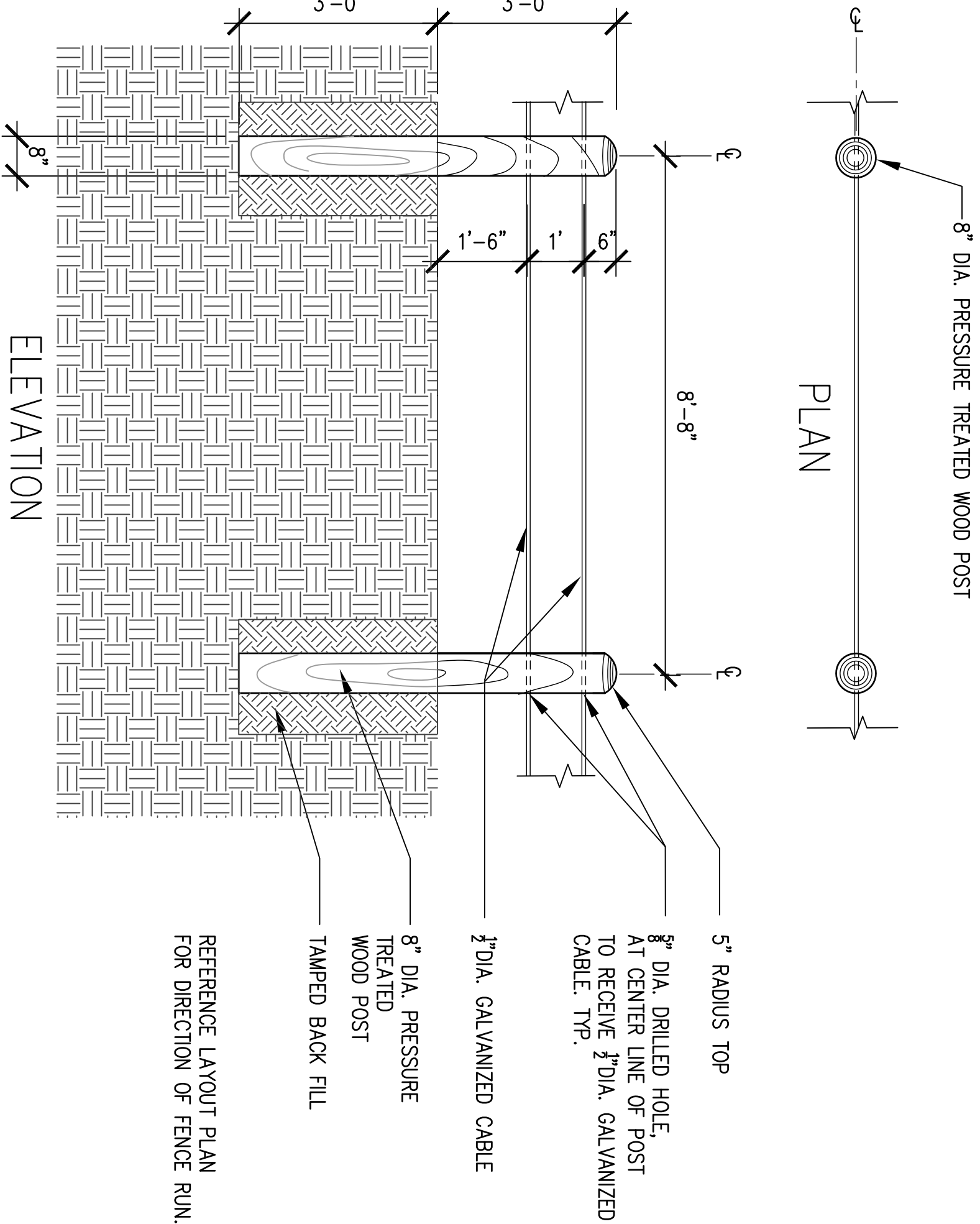
L4.03
● COPYRIGHT 2008 S W A GROUP



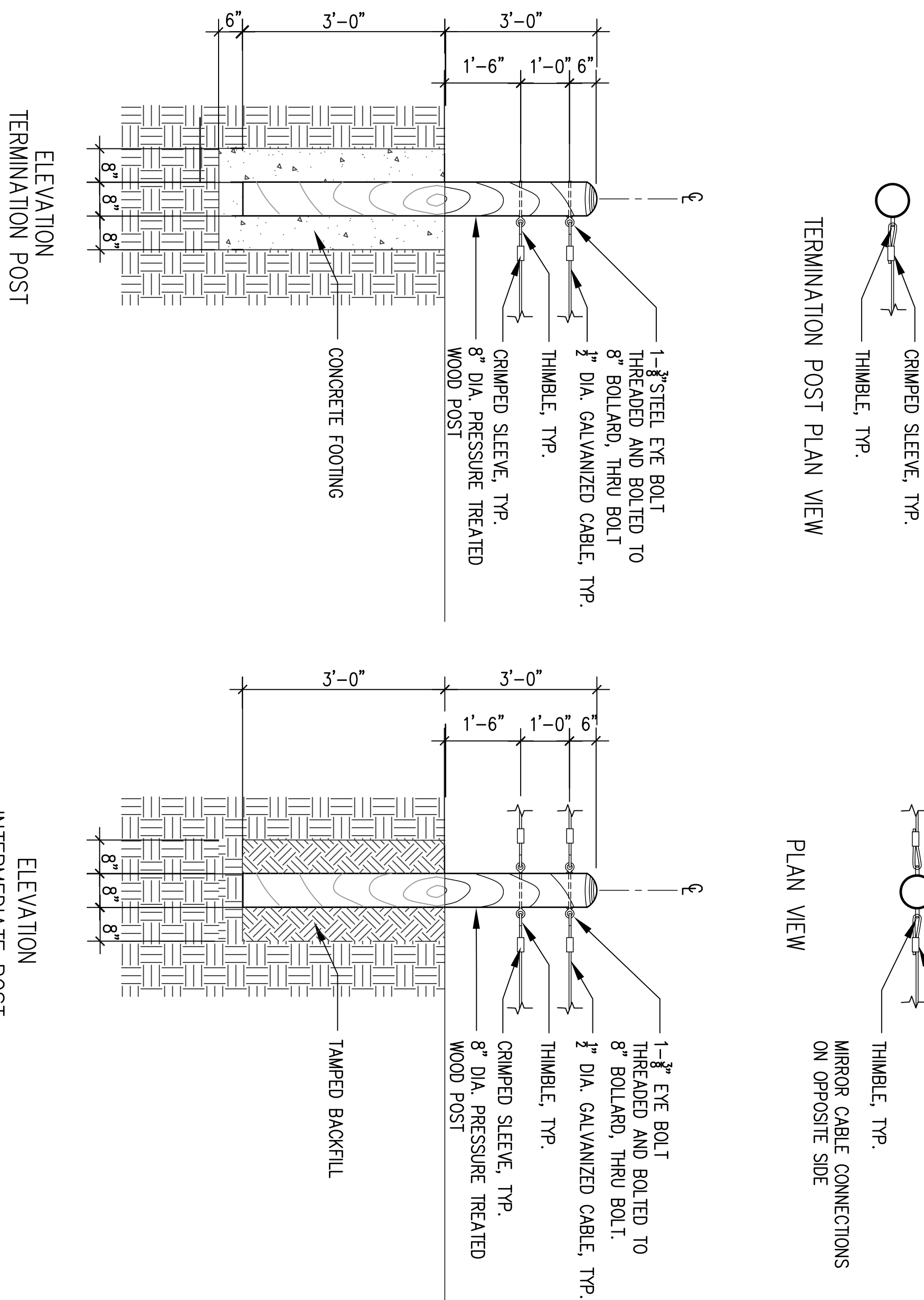
5 PLAN – STEEL BOLLARDS
1/4"=1'-0"

4 SECTION – BIOSWALE
1/2"=1'-0"

3 SECTION – STEEL BOLLARD
3/4"=1'-0"



2 SECTION – BOLLARD FENCE
1/2"=1'-0"



1 BOLLARD FENCE POSTS
1/2"=1'-0"

BRAYS BAYOU TRAIL PLAN

(MOUTH OF BRAYS BAYOU TO
MASON PARK)

BRAYS BAYOU
TRAIL PLAN
(MOUTH OF BRAYS BAYOU TO
MASON PARK)

HOUSTON, TEXAS



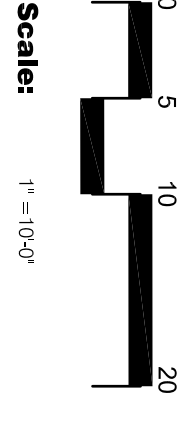
HOUSTON LEGUINE
SANTA MONICA LOS ANGELES
DALLAS SHANGHAI

1245 W. 18TH STREET
HOUSTON, TX, 77008
P.O. BOX 713,888,7409
PH. 713.888.1676



1. 11.03.08 ISSUED FOR BIDDING
2. 12.04.08 ISSUED FOR CONSTRUCTION
- 3.
- 4.
- 5.

Revisions



Date: 4-18-08
Job Number: 107-001

Drawing Title
GRADING:
PARKING LOT

Drawing Number
L5.01
© COPYRIGHT 2008 SWA Group

NOTE:
ALL GRADING AT FROM EDGE OF PAVING AND SWALES TO
CONNECT TO BE FEATHERED TO EXISTING GRADES
AT A MAXIMUM 10:1 SLOPE

